

Gewünschter Liefertermin: .....  
 Abholung am: .....

**AUFTRAGGEBER:**  
 Bestelldatum: .....

Bestell-Liste-Datum: 01.04.2019

# BESTELL-LISTE GEWINDEFITTINGS SCHWARZ

Ausführung Artikel Menge VE

Ausführung Artikel Menge VE

## TEMPERGUSSFITTINGS SCHWARZ



### 1 - Bogen 90° I/A lang

DN 8 (1/4")	2600001	10 Stk
DN 10 (3/8")	2600002	10 Stk
DN 15 (1/2")	2600003	10 Stk
DN 20 (3/4")	2600004	10 Stk
DN 25 (1")	2600005	10 Stk
DN 32 (1 1/4")	2600006	10 Stk
DN 40 (1 1/2")	2600007	1 Stk
DN 50 (2")	2600008	1 Stk
DN 65 (2 1/2")	2600009	1 Stk
DN 80 (3")	2600010	1 Stk
DN 100 (4")	2600011	1 Stk



### 40 - Bogen 45° I/A

DN 8 (1/4")	2600061	10 Stk
DN 10 (3/8")	2600062	10 Stk
DN 15 (1/2")	2600063	10 Stk
DN 20 (3/4")	2600064	10 Stk
DN 25 (1")	2600065	10 Stk
DN 32 (1 1/4")	2600066	1 Stk
DN 40 (1 1/2")	2600067	1 Stk
DN 50 (2")	2600068	1 Stk
DN 65 (2 1/2")	2600069	1 Stk
DN 80 (3")	2600070	1 Stk
DN 100 (4")	2600071	1 Stk



### 2 - Bogen 90° I/I lang

DN 8 (1/4")	2600031	10 Stk
DN 10 (3/8")	2600032	10 Stk
DN 15 (1/2")	2600033	10 Stk
DN 20 (3/4")	2600034	10 Stk
DN 25 (1")	2600035	10 Stk
DN 32 (1 1/4")	2600036	1 Stk
DN 40 (1 1/2")	2600037	1 Stk
DN 50 (2")	2600038	1 Stk
DN 65 (2 1/2")	2600039	1 Stk
DN 80 (3")	2600040	1 Stk
DN 100 (4")	2600041	1 Stk



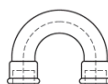
### 41 - Bogen 45° I/I

DN 8 (1/4")	2600081	10 Stk
DN 10 (3/8")	2600082	10 Stk
DN 15 (1/2")	2600083	10 Stk
DN 20 (3/4")	2600084	10 Stk
DN 25 (1")	2600085	10 Stk
DN 32 (1 1/4")	2600086	1 Stk
DN 40 (1 1/2")	2600087	1 Stk
DN 50 (2")	2600088	1 Stk
DN 65 (2 1/2")	2600089	1 Stk
DN 80 (3")	2600090	1 Stk
DN 100 (4")	2600091	1 Stk



### 3 - Bogen 90° A/A lang

DN 8 (1/4")	2600051	10 Stk
DN 10 (3/8")	2600052	10 Stk
DN 15 (1/2")	2600053	10 Stk
DN 20 (3/4")	2600054	10 Stk
DN 25 (1")	2600055	10 Stk
DN 32 (1 1/4")	2600056	1 Stk
DN 40 (1 1/2")	2600057	1 Stk
DN 50 (2")	2600058	1 Stk



### 60 - Doppelbogen I/I

DN 15 (1/2")	2600103	10 Stk
DN 20 (3/4")	2600104	10 Stk
DN 25 (1")	2600105	10 Stk
DN 32 (1 1/4")	2600106	1 Stk
DN 40 (1 1/2")	2600107	1 Stk
DN 50 (2")	2600108	1 Stk

Bestell-Liste-Datum: 01.04.2019

Gewünschter Liefertermin: .....

Abholung am: .....

AUFTRAGGEBER:

Bestelldatum: .....

**GEWINDEFITTINGS SCHWARZ**

**BESTELL-LISTE**

**Ausführung Artikel Menge VE**

**Ausführung Artikel Menge VE**



**85 - Überspringbogen I/I**

DN 10 (3/8")	2600112	10 Stk
DN 15 (1/2")	2600113	10 Stk
DN 20 (3/4")	2600114	10 Stk
DN 25 (1")	2600115	10 Stk
DN 32 (1 1/4")	2600116	1 Stk
DN 40 (1 1/2")	2600117	1 Stk
DN 50 (2")	2600118	1 Stk



**92 - Winkel 90° I/A**

DN 6 (1/8")	2600160	1 Stk
DN 8 (1/4")	2600161	10 Stk
DN 10 (3/8")	2600162	10 Stk
DN 15 (1/2")	2600163	10 Stk
DN 20 (3/4")	2600164	10 Stk
DN 25 (1")	2600165	10 Stk
DN 32 (1 1/4")	2600166	1 Stk
DN 40 (1 1/2")	2600167	1 Stk
DN 50 (2")	2600168	1 Stk
DN 65 (2 1/2")	2600169	1 Stk
DN 80 (3")	2600170	1 Stk
DN 100 (4")	2600171	1 Stk



**90 - Winkel 90° I/I**

DN 8 (1/4")	2600121	1 Stk
DN 10 (3/8")	2600122	10 Stk
DN 15 (1/2")	2600123	10 Stk
DN 20 (3/4")	2600124	10 Stk
DN 25 (1")	2600125	10 Stk
DN 32 (1 1/4")	2600126	1 Stk
DN 40 (1 1/2")	2600127	1 Stk
DN 50 (2")	2600128	1 Stk
DN 65 (2 1/2")	2600129	1 Stk
DN 80 (3")	2600130	1 Stk
DN 100 (4")	2600131	1 Stk



**330 - Verschraubung flach dichtend I/I**

DN 10 (3/8")	2600732	10 Stk
DN 15 (1/2")	2600733	10 Stk
DN 20 (3/4")	2600734	10 Stk
DN 25 (1")	2600735	10 Stk
DN 32 (1 1/4")	2600736	1 Stk
DN 40 (1 1/2")	2600737	1 Stk
DN 50 (2")	2600738	1 Stk
DN 65 (2 1/2")	2600739	1 Stk



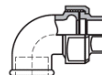
**90 - Winkel 90° reduziert I/I**

DN 15 x 10 (1/2x3/8")	2600136	10 Stk
DN 20 x 10 (3/4x3/8")	2600137	10 Stk
DN 20 x 15 (3/4x1/2")	2600138	10 Stk
DN 25 x 15 (1x1/2")	2600139	10 Stk
DN 25 x 20 (1x3/4")	2600140	10 Stk
DN 32 x 20 (1 1/4x3/4")	2600141	1 Stk
DN 32 x 25 (1 1/4x1")	2600142	1 Stk
DN 40 x 15 (1 1/2x1/2")	2600143	1 Stk
DN 40 x 20 (1 1/2x3/4")	2600144	1 Stk
DN 40 x 25 (1 1/2x1")	2600145	1 Stk
DN 40 x 32 (1 1/2x1 1/4")	2600146	1 Stk
DN 50 x 25 (2x1")	2600147	1 Stk
DN 50 x 32 (2x1 1/4")	2600148	1 Stk
DN 50 x 40 (2x1 1/2")	2600149	1 Stk
DN 65 x 50 (2 1/2x2")	2600150	1 Stk
DN 80 x 50 (3x2")	2600151	1 Stk



**331 - Verschraubung flach dichtend I/A**

DN 10 (3/8")	2600752	10 Stk
DN 15 (1/2")	2600753	10 Stk
DN 20 (3/4")	2600754	10 Stk
DN 25 (1")	2600755	10 Stk
DN 32 (1 1/4")	2600756	1 Stk
DN 40 (1 1/2")	2600757	1 Stk
DN 50 (2")	2600758	1 Stk



**95 - Winkelverschraubung I/I flach dichtend**

DN 10 (3/8")	2600182	10 Stk
DN 15 (1/2")	2600183	10 Stk
DN 20 (3/4")	2600184	10 Stk
DN 25 (1")	2600185	10 Stk
DN 32 (1 1/4")	2600186	1 Stk
DN 40 (1 1/2")	2600187	1 Stk
DN 50 (2")	2600188	1 Stk

Bestell-Liste-Datum: 01.04.2019

Gewünschter Liefertermin: .....

Abholung am: .....

**AUFTRAGGEBER:**

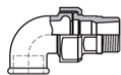
Bestelldatum: .....

**GEWINDEFITTINGS SCHWARZ**

**BESTELL-LISTE**

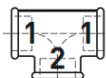
**Ausführung Artikel Menge VE**

**Ausführung Artikel Menge VE**



**97 - Winkelverschraubung I/A flach dichtend**

DN 10 (3/8")	2600202	10 Stk
DN 15 (1/2")	2600203	10 Stk
DN 20 (3/4")	2600204	10 Stk
DN 25 (1")	2600205	10 Stk
DN 32 (1 1/4")	2600206	1 Stk
DN 40 (1 1/2")	2600207	1 Stk
DN 50 (2")	2600208	1 Stk



**130 - T-Stück reduziert I/I/I**

DN 15 x 10 (1/2x3/8x1/2")	2600256	10 Stk
DN 20 x 10 (3/4x3/8x3/4")	2600257	10 Stk
DN 20 x 15 (3/4x1/2x13/4")	2600258	10 Stk
DN 25 x 15 (1x1/2x1")	2600259	10 Stk
DN 25 x 20 (1x3/4x1")	2600260	10 Stk
DN 32 x 15 (1 1/4x1/2x1 1/4")	2600261	1 Stk
DN 32 x 20 (1 1/4x3/4x1 1/4")	2600262	1 Stk
DN 32 x 25 (1 1/4x1x1 1/4")	2600263	1 Stk
DN 40 x 15 (1 1/2x1/2x1 1/2")	2600264	1 Stk
DN 40 x 20 (1 1/2x3/4x1 1/2")	2600265	1 Stk
DN 40 x 25 (1 1/2x1x1 1/2")	2600266	1 Stk
DN 40 x 32 (1 1/2x1 1/4x1 1/2")	2600267	1 Stk
DN 50 x 15 (2x1/2x2")	2600268	1 Stk
DN 50 x 20 (2x3/4x2")	2600269	1 Stk
DN 50 x 25 (2x1x2")	2600270	1 Stk
DN 50 x 32 (2x1 1/4x2")	2600271	1 Stk
DN 50 x 40 (2x1 1/2x2")	2600272	1 Stk
DN 65 x 40 (2 1/2x1 1/2x2 1/2")	2600273	1 Stk
DN 65 x 50 (2 1/2x2x2 1/2")	2600274	1 Stk
DN 80 x 40 (3x1 1/2x3")	2600275	1 Stk
DN 80 x 50 (3x2x3")	2600276	1 Stk
DN 80 x 65 (3x2 1/2x3")	2600277	1 Stk
DN 100 x 80 (4x3x4")	2600278	1 Stk



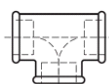
**120 - Winkel 45° I/I**

DN 10 (3/8")	2600221	10 Stk
DN 15 (1/2")	2600222	10 Stk
DN 20 (3/4")	2600223	10 Stk
DN 25 (1")	2600224	10 Stk
DN 32 (1 1/4")	2600225	1 Stk
DN 40 (1 1/2")	2600226	1 Stk
DN 50 (2")	2600227	1 Stk



**121 - Winkel 45° I/A**

DN 10 (3/8")	2600232	10 Stk
DN 15 (1/2")	2600233	10 Stk
DN 20 (3/4")	2600234	10 Stk
DN 25 (1")	2600235	10 Stk
DN 32 (1 1/4")	2600236	1 Stk
DN 40 (1 1/2")	2600237	1 Stk
DN 50 (2")	2600238	1 Stk



**130 - T-Stück egal I/I**

DN 8 (1/4")	2600241	10 Stk
DN 10 (3/8")	2600242	10 Stk
DN 15 (1/2")	2600243	10 Stk
DN 20 (3/4")	2600244	10 Stk
DN 25 (1")	2600245	10 Stk
DN 32 (1 1/4")	2600246	1 Stk
DN 40 (1 1/2")	2600247	1 Stk
DN 50 (2")	2600248	1 Stk
DN 65 (2 1/2")	2600249	1 Stk
DN 80 (3")	2600250	1 Stk
DN 100 (4")	2600251	1 Stk



**130 - T-Stück reduziert I/I/I**

DN 15 x 15 x 10 (1/2x1/2x3/8")	2600286	10 Stk
DN 15 x 20 x 15 (1/2x3/4x1/2")	2600287	10 Stk
DN 20 x 15 x 15 (3/4x1/2x1/2")	2600288	10 Stk
DN 20 x 20 x 15 (3/4x3/4x1/2")	2600289	10 Stk
DN 20 x 25 x 20 (3/4x1x3/4")	2600290	10 Stk
DN 25 x 15 x 15 (1x1/2x1/2")	2600291	10 Stk
DN 25 x 15 x 20 (1x1/2x3/4")	2600292	10 Stk
DN 25 x 20 x 15 (1x3/4x1/2")	2600293	10 Stk
DN 25 x 20 x 20 (1x3/4x3/4")	2600294	10 Stk
DN 25 x 25 x 15 (1x1x1/2")	2600295	10 Stk
DN 25 x 25 x 20 (1x1x3/4")	2600296	10 Stk
DN 32 x 25 x 25 (1 1/4x1x1")	2600297	1 Stk
DN 32 x 32 x 25 (1 1/4x1 1/4x1)	2600298	1 Stk
DN 40 x 40 x 32 (1 1/2x1 1/2x1)	2600299	1 Stk

Bestell-Liste-Datum: 01.04.2019

Gewünschter Liefertermin: .....

Abholung am: .....

**AUFTRAGGEBER:**

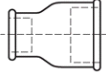
Bestelldatum: .....

**GEWINDEFITTINGS SCHWARZ**

**BESTELL-LISTE**

Ausführung                      Artikel   Menge   VE

Ausführung                      Artikel   Menge   VE



**240 - Muffe reduziert I/I**

DN 8 x 6 (1/4x1/8")	2600390	10 Stk
DN 10 x 6 (3/8x1/8")	2600391	10 Stk
DN 10 x 8 (3/8x1/4")	2600392	10 Stk
DN 15 x 8 (1/2x1/4")	2600393	10 Stk
DN 15 x 10 (1/2x3/8")	2600394	10 Stk
DN 20 x 8 (3/4"x1/4")	2600395	10 Stk
DN 20 x 10 (3/4x3/8")	2600396	10 Stk
DN 20 x 15 (3/4x1/2")	2600397	10 Stk
DN 25 x 10 (1"x3/8")	2600398	10 Stk
DN 25 x 15 (1x1/2")	2600399	10 Stk
DN 25 x 20 (1x3/4")	2600400	10 Stk
DN 32 x 10 (1 1/4x3/8")	2600401	1 Stk
DN 32 x 15 (1 1/4x1/2")	2600402	1 Stk
DN 32 x 20 (1 1/4x3/4")	2600403	1 Stk
DN 32 x 25 (1 1/4x1")	2600404	1 Stk
DN 40 x 15 (1 1/2x1/2")	2600405	1 Stk
DN 40 x 20 (1 1/2x3/4")	2600406	1 Stk
DN 40 x 25 (1 1/2x1")	2600407	1 Stk
DN 40 x 32 (1 1/2x1 1/4")	2600408	1 Stk
DN 50 x 15 (2x1/2")	2600409	1 Stk
DN 50 x 20 (2"x3/4")	2600410	1 Stk
DN 50 x 25 (2x1")	2600411	1 Stk
DN 50 x 32 (2x1 1/4")	2600412	1 Stk
DN 50 x 40 (2x1 1/2")	2600413	1 Stk
DN 65 x 25 (2 1/2x1")	2600414	1 Stk
DN 65 x 50 (2 1/2x2")	2600415	1 Stk
DN 80 x 50 (3x2")	2600416	1 Stk
DN 80 x 65 (3x2 1/2")	2600417	1 Stk
DN 100 x 80 (4x3")	2600418	1 Stk



**241 - Reduktionsstück A/I**

DN 8 x 6 (1/4x1/8")	2600430	10 Stk
DN 10 x 6 (3/8x1/8")	2600431	10 Stk
DN 10 x 8 (3/8x1/4")	2600432	10 Stk
DN 15 x 8 (1/2x1/4")	2600433	10 Stk
DN 15 x 10 (1/2x3/8")	2600434	10 Stk
DN 20 x 8 (3/4x1/4")	2600435	10 Stk
DN 20 x 10 (3/4x3/8")	2600436	10 Stk
DN 20 x 15 (3/4x1/2")	2600437	10 Stk
DN 25 x 8 (1x1/4")	2600438	10 Stk
DN 25 x 10 (1x3/8")	2600439	10 Stk
DN 25 x 15 (1x1/2")	2600440	10 Stk
DN 25 x 20 (1x3/4")	2600441	10 Stk
DN 32 x 10 (1 1/4x3/8")	2600442	1 Stk
DN 32 x 15 (1 1/4x1/2")	2600443	1 Stk
DN 32 x 20 (1 1/4x3/4")	2600444	1 Stk
DN 32 x 25 (1 1/4x1")	2600445	1 Stk
DN 40 x 10 (1 1/2x3/8")	2600446	1 Stk
DN 40 x 15 (1 1/2x1/2")	2600447	1 Stk
DN 40 x 20 (1 1/2x3/4")	2600448	1 Stk
DN 40 x 25 (1 1/2x1")	2600449	1 Stk
DN 40 x 32 (1 1/2x1 1/4")	2600450	1 Stk
DN 50 x 15 (2x1/2")	2600451	1 Stk
DN 50 x 20 (2x3/4")	2600452	1 Stk
DN 50 x 25 (2x1")	2600453	1 Stk
DN 50 x 32 (2x1 1/4")	2600454	1 Stk
DN 50 x 40 (2x1 1/2")	2600455	1 Stk
DN 65 x 25 (2 1/2x1")	2600456	1 Stk
DN 65 x 32 (2 1/2x1 1/4")	2600457	1 Stk
DN 65 x 40 (2 1/2x1 1/2")	2600458	1 Stk
DN 65 x 50 (2 1/2x2")	2600459	1 Stk
DN 80 x 20 (3x3/4")	2600460	1 Stk
DN 80 x 25 (3x1")	2600461	1 Stk
DN 80 x 32 (3x1 1/4")	2600462	1 Stk
DN 80 x 40 (3x1 1/2")	2600463	1 Stk
DN 80 x 50 (3x2")	2600464	1 Stk
DN 80 x 65 (3x2 1/2")	2600465	1 Stk
DN 100 x 40 (4x1 1/2")	2600466	1 Stk
DN 100 x 50 (4x2")	2600467	1 Stk
DN 100 x 65 (4x2 1/2")	2600468	1 Stk
DN 100 x 80 (4x3")	2600469	1 Stk

Bestell-Liste-Datum: 01.04.2019

Gewünschter Liefertermin: .....

Abholung am: .....

AUFTRAGGEBER:

Bestelldatum: .....

**GEWINDEFITTINGS SCHWARZ**

**BESTELL-LISTE**

**Ausführung Artikel Menge VE**

**Ausführung Artikel Menge VE**



**245 - Reduktions-Doppelnippel A/A**

DN 8 x 6 (1/4x1/8")	2600480	10 Stk
DN 10 x 6 (3/8x1/8")	2600481	10 Stk
DN 10 x 8 (3/8x1/4")	2600482	10 Stk
DN 15 x 8 (1/2x1/4")	2600483	10 Stk
DN 15 x 10 (1/2x3/8")	2600484	10 Stk
DN 20 x 10 (3/4x3/8")	2600485	10 Stk
DN 20 x 15 (3/4x1/2")	2600486	10 Stk
DN 25 x 10 (1x3/8")	2600487	10 Stk
DN 25 x 15 (1x1/2")	2600488	10 Stk
DN 25 x 20 (1x3/4")	2600489	10 Stk
DN 32 x 15 (1 1/4x1/2")	2600490	1 Stk
DN 32 x 20 (1 1/4x3/4")	2600491	1 Stk
DN 32 x 25 (1 1/4x1")	2600492	1 Stk
DN 40 x 15 (1 1/2x1/2")	2600493	1 Stk
DN 40 x 20 (1 1/2x3/4")	2600494	1 Stk
DN 40 x 25 (1 1/2x1")	2600495	1 Stk
DN 40 x 32 (1 1/2x1 1/4")	2600496	1 Stk
DN 50 x 25 (2x1")	2600497	1 Stk
DN 50 x 32 (2x1 1/4")	2600498	1 Stk
DN 50 x 40 (2x1 1/2")	2600499	1 Stk
DN 65 x 50 (2 1/2x2")	2600500	1 Stk
DN 80 x 50 (3x2")	2600501	1 Stk
DN 80 x 65 (3x2 1/2")	2600502	1 Stk



**270 - Muffe I/I**

DN 6 (1/8")	2600540	10 Stk
DN 8 (1/4")	2600541	10 Stk
DN 10 (3/8")	2600542	10 Stk
DN 15 (1/2")	2600543	10 Stk
DN 20 (3/4")	2600544	10 Stk
DN 25 (1")	2600545	10 Stk
DN 32 (1 1/4")	2600546	1 Stk
DN 40 (1 1/2")	2600547	1 Stk
DN 50 (2")	2600548	1 Stk
DN 65 (2 1/2")	2600549	1 Stk
DN 80 (3")	2600550	1 Stk
DN 100 (4")	2600551	1 Stk



**280 - Doppelnippel A/A**

DN 6 (1/8")	2600580	10 Stk
DN 8 (1/4")	2600581	10 Stk
DN 10 (3/8")	2600582	10 Stk
DN 15 (1/2")	2600583	10 Stk
DN 20 (3/4")	2600584	10 Stk
DN 25 (1")	2600585	10 Stk
DN 32 (1 1/4")	2600586	1 Stk
DN 40 (1 1/2")	2600587	1 Stk
DN 50 (2")	2600588	1 Stk
DN 65 (2 1/2")	2600589	1 Stk
DN 80 (3")	2600590	1 Stk
DN 100 (4")	2600591	1 Stk



**246 - Muffe reduziert I/A**

DN 8 x 6 (1/4x1/8")	2600510	10 Stk
DN 10 x 8 (3/8x1/4")	2600511	10 Stk
DN 15 x 8 (1/2x1/4")	2600512	10 Stk
DN 15 x 10 (1/2x3/8")	2600513	10 Stk
DN 20 x 10 (3/4x3/8")	2600514	10 Stk
DN 20 x 15 (3/4x1/2")	2600515	10 Stk
DN 25 x 15 (1x1/2")	2600516	10 Stk
DN 25 x 20 (1x3/4")	2600517	10 Stk
DN 32 x 15 (1 1/4x1/2")	2600518	1 Stk
DN 32 x 20 (1 1/4x3/4")	2600519	1 Stk
DN 32 x 25 (1 1/4x1")	2600520	1 Stk
DN 40 x 20 (1 1/2x3/4")	2600521	1 Stk
DN 40 x 25 (1 1/2x1")	2600522	1 Stk
DN 40 x 32 (1 1/2x1 1/4")	2600523	1 Stk
DN 50 x 25 (2x1")	2600524	1 Stk
DN 50 x 32 (2x1 1/4")	2600525	1 Stk
DN 50 x 40 (2x1 1/2")	2600526	1 Stk



**290 - Stopfen mit Rand**

DN 6 (1/8")	2600600	10 Stk
DN 8 (1/4")	2600601	10 Stk
DN 10 (3/8")	2600602	10 Stk
DN 15 (1/2")	2600603	10 Stk
DN 20 (3/4")	2600604	10 Stk
DN 25 (1")	2600605	10 Stk
DN 32 (1 1/4")	2600606	1 Stk
DN 40 (1 1/2")	2600607	1 Stk
DN 50 (2")	2600608	1 Stk
DN 65 (2 1/2")	2600609	1 Stk
DN 80 (3")	2600610	1 Stk
DN 100 (4")	2600611	1 Stk

Bestell-Liste-Datum: 01.04.2019

Gewünschter Liefertermin: .....

Abholung am: .....

AUFTRAGGEBER:

Bestelldatum: .....

## GEWINDEFITTINGS SCHWARZ

## BESTELL-LISTE

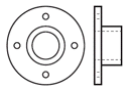
Ausführung Artikel Menge VE

Ausführung Artikel Menge VE



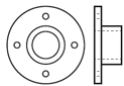
### 301 - Kappe rund

DN 8 (1/4")	2600661	10 Stk
DN 10 (3/8")	2600662	10 Stk
DN 15 (1/2")	2600663	10 Stk
DN 20 (3/4")	2600664	10 Stk
DN 25 (1")	2600665	10 Stk
DN 32 (1 1/4")	2600666	1 Stk
DN 40 (1 1/2")	2600667	1 Stk
DN 50 (2")	2600668	1 Stk
DN 65 (2 1/2")	2600669	1 Stk
DN 80 (3")	2600670	1 Stk
DN 100 (4")	2600671	1 Stk



### Gewindeflansch PN 6

DN 15 (1/2") diag. Lochabst. 5	2600713	1 Stk
DN 20 (3/4") diag. Lochabst. 6	2600714	1 Stk
DN 25 (1") diag. Lochabst. 75	2600715	1 Stk
DN 32 (1 1/4") diag. Lochabst.	2600716	1 Stk
DN 40 (1 1/2") diag. Lochabst.	2600717	1 Stk
DN 50 (2") diag. Lochabst. 110	2600718	1 Stk
DN 65 (2 1/2") diag. Lochabst.1	2600719	1 Stk
DN 80 (3") diag. Lochabst. 150	2600720	1 Stk
DN 100 (4") diag. Lochabst. 17	2600721	1 Stk



### Gewindeflansch PN 10/16, PN 40

DN 15 (1/2") diag. Lochabst. 6	2600773	1 Stk
DN 20 (3/4") diag. Lochabst. 7	2600774	1 Stk
DN 25 (1") diag. Lochabst. 85	2600775	1 Stk
DN 32 (1 1/4") diag. Lochabst.	2600776	1 Stk
DN 40 (1 1/2") diag. Lochabst.	2600777	1 Stk
DN 50 (2") diag. Lochabst. 125	2600778	1 Stk
DN 65 (2 1/2") 4-Loch diag. Lo	2600779	1 Stk
DN 65 (2 1/2") 8-Loch diag. Lo	2600780	1 Stk
DN 80 (3") diag. Lochabst. 160	2600781	1 Stk
DN100 (4") diag. Lochabst. 180	2600782	1 Stk

## PUMPEN-VERSCHRAUBUNGSSETS



### SW Pumpenanschluss-Verschraubungen im Set zu 2 Stück

910SW, IG mit Dichtung, 3/4" x	1434200	1 Set
910SW, IG mit Dichtung, 1" x 6	1434201	1 Set
910SW, IG mit Dichtung, 5/4" x	1434202	1 Set
926SW, AG mit Dichtung, 1" x	1434215	1 Set
926SW, AG mit Dichtung, 5/4"	1434216	1 Set